

Name:

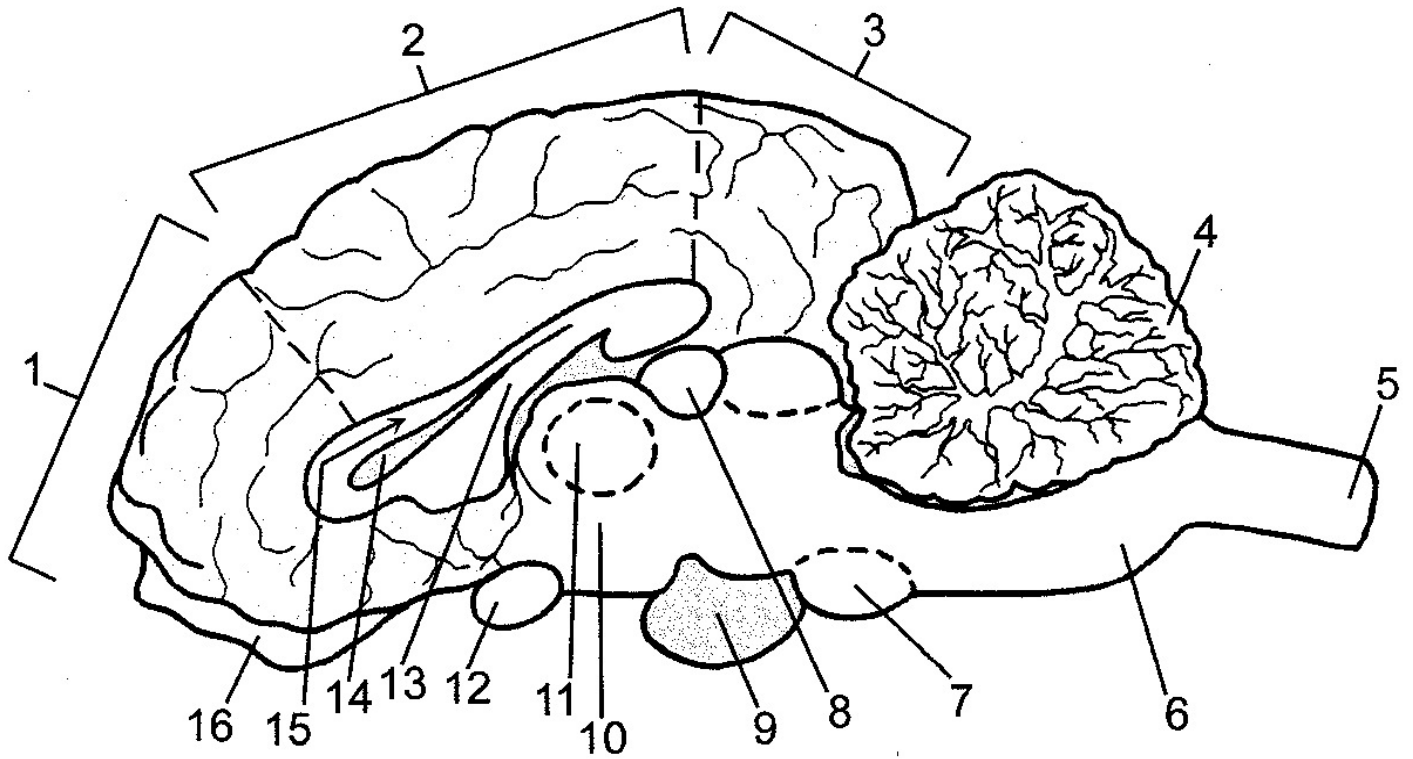
Period:



11-14 The Nervous System

Lab Practical Terms List

1. afferent
2. arachnoid mater
3. arbor vitae
4. axon
5. balance and coordination
6. bipolar neuron
7. brain stem
8. cell body
9. central canal
10. cerebellum
11. cerebral aqueduct
12. cerebral spinal fluid (CSF)
13. cerebrum
14. choroid plexus
15. communication of cerebral hemisphere
16. corpora quadrigemina
17. corpus callosum
18. cranial nerve
19. dendrite
20. diencephalon
21. dorsal root
22. dorsal root ganglion
23. dura mater
24. efferent
25. endoneurium
26. ependymal cells
27. epithalamus
28. epineurium
29. falx cerebri
30. fornix
31. fourth ventricle
32. frontal lobe
33. gray matter
34. gyrus
35. hypothalamus
36. lateral ventricle
37. longitudinal fissure
38. make cerebral spinal fluid
39. mammillary body
40. medulla oblongata
41. midbrain
42. motor
43. multipolar neuron
44. myelinated axons
45. neuroglia cells
46. node of Ranvier
47. nucleus
48. occipital lobe
49. olfactory bulb
50. olfactory lobe
51. optic chiasma
52. optic nerve
53. parietal lobe
54. perineurium
55. pia mater
56. pineal body (gland)
57. pituitary gland
58. pons
59. postcentral gyrus
60. precentral gyrus
61. protect the brain
62. reasoning, motor
63. Schwann cell
64. sense of smell
65. sensory
66. septum pellucidum
67. speech; auditory
68. spinal nerves
69. subarachnoid space
70. sulcus
71. temporal lobe
72. tentorium cerebelli
73. thalamus
74. third ventricle
75. unipolar neuron
76. ventral root
77. vertebral canal
78. vision sensory
79. visual cortex
80. white matter



- 1. frontal lobe
- 2. parietal lobe
- 3. occipital lobe
- 4. cerebellum
- 5. spinal cord
- 6. medulla oblongata
- 7. pons
- 8. pineal body

- 9. pituitary gland
- 10. hypothalamus
- 11. thalamus
- 12. optic chiasma
- 13. fornix
- 14. lateral ventricle
- 15. corpus callosum
- 16. olfactory bulb

also find:

- 17. arbor vitae
- 18. white matter
- 19. grey matter
- 20. corpora quadrigemina
- 21. mammillary body
- 22. cerebral aqueduct
- 23. 3rd ventricle
- 24. 4th ventricle