

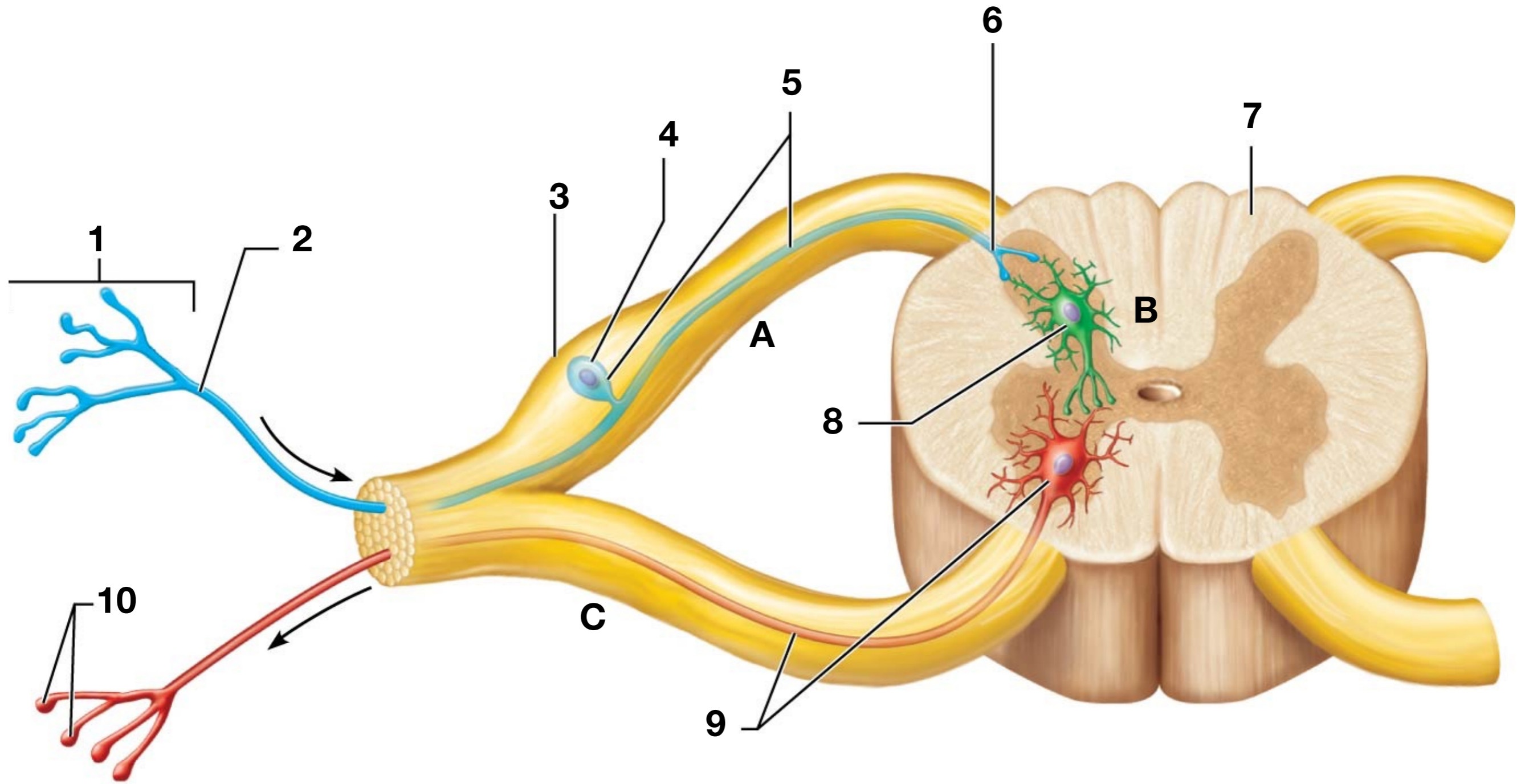
Reaction Time



Lab # 17

Miss School, Miss Out!

Neuron Classification - Structural vs. Functional



Reaction Time

Question: Which has a faster reaction time, sight or sound?

Hypothesis/Prediction:

Observations/Data:

Analysis & Conclusion:

Data

Personal Data		
Trial	Distance Ruler Falls (m)	
	Sight	Sound
1		
2		
3		
4		
5		
Average		
Reaction Time		

$$t = \sqrt{\frac{2d}{a}}$$

d = distance (m)

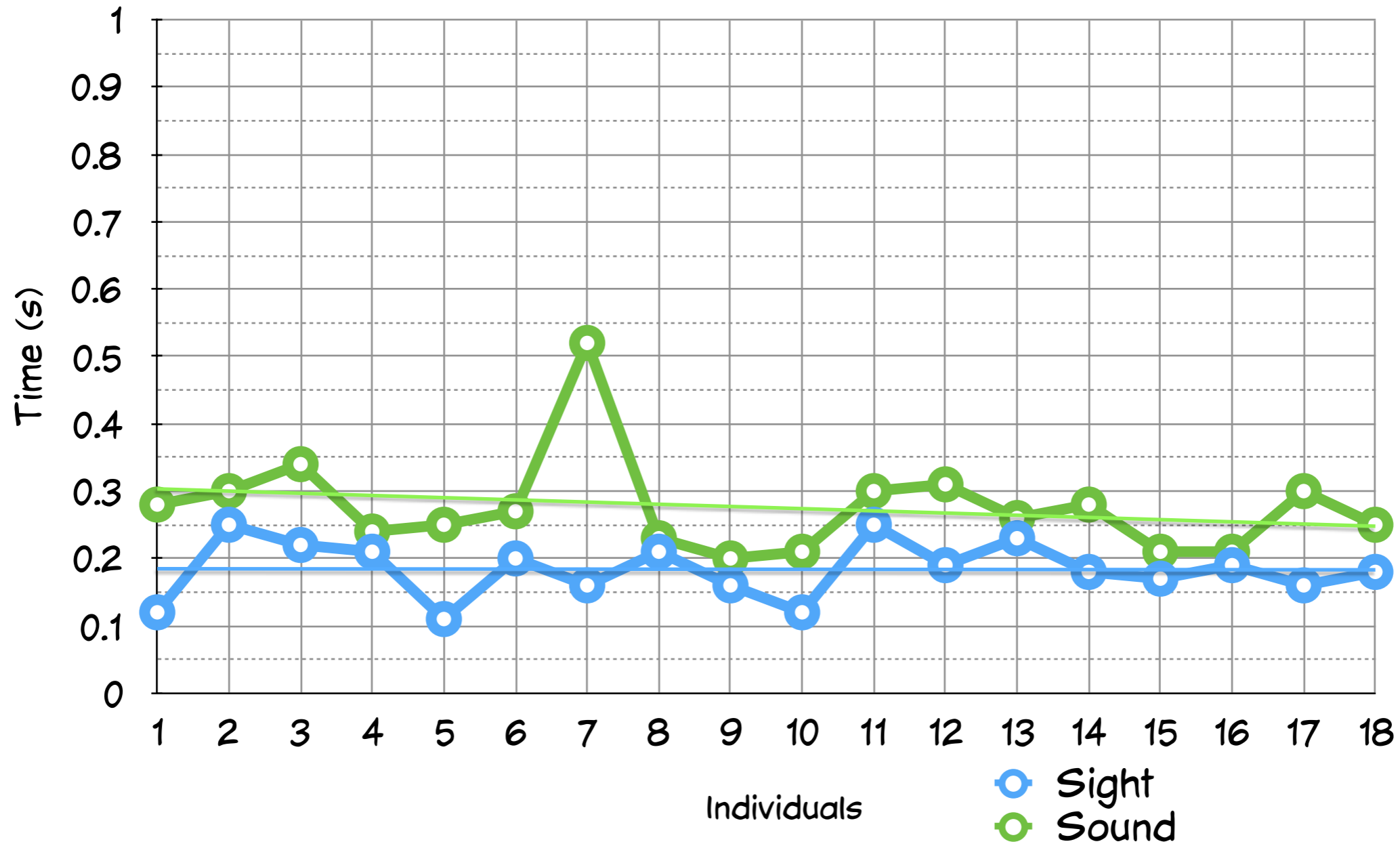
a = acceleration (9.8 m/s²)

Data

Class Data		
Trial	Time (s)	
	Sight	Sound
1		
2		
3		
4		
5		
6		
7		
8		
9		
10		
11		
12		
13		
14		
15		
16		
17		
17		
18		

Class Data		
Trial	Time (s)	
	Sight	Sound
1	0.12	0.28
2	0.25	0.3
3	0.22	0.34
4	0.21	0.24
5	0.11	0.25
6	0.2	0.27
7	0.16	0.52
8	0.21	0.23
9	0.16	0.2
10	0.12	0.21
11	0.25	0.3
12	0.19	0.31
13	0.23	0.26
14	0.18	0.28
15	0.17	0.21
16	0.19	0.21
17	0.16	0.95
17	0.18	0.25
18	0.19	0.37

Reaction Time Sight vs. Sound



***Overall average sight
0.20***

***Overall average sound
0.26***

R=0.303

Reaction Time Sight vs. Sound

