

Exploring Human Tissues



Lab # 8

Miss School, Miss Out!

Exploring Human Tissues

- **Question:** How are human tissues classified?
- **Procedure** - Examine various tissue slides: For each major tissue category, make 3 observations and one inference.
Take a picture of:
 - epithelial:** pick 1
 - connective:** pick 1
- **Observations/Data** - 3 observations and 1 inference for each major tissue; 2 properly labeled tissue pictures
- **Analysis & Conclusion** - Not required for this lab.

Epithelial Tissue

1. simple squamous
2. simple cuboidal
3. simple columnar
4. pseudostratified ciliated columnar
5. Stratified squamous - unkeratinized
6. transitional

Connective Tissue

1. bone
2. hyaline cartilage
3. blood
4. areolar (loose connective)
5. adipose
6. dense fibrous regular

Exploring Human Tissues

Muscle Tissue

1. skeletal
2. cardiac
3. smooth

Nervous Tissue

1. neurons and glia cells

Exploring Human Tissues

Using the markup tool on your phone, for each of your 2 pictures, provide the following:

- Tissue name
- Trace/Outline a single cell

For each *Epithelial Tissue*, also include:

- Identify the tissue from the background
- identification of the apical surface
- identification of the basement membrane

For *Connective Tissue*, also include:

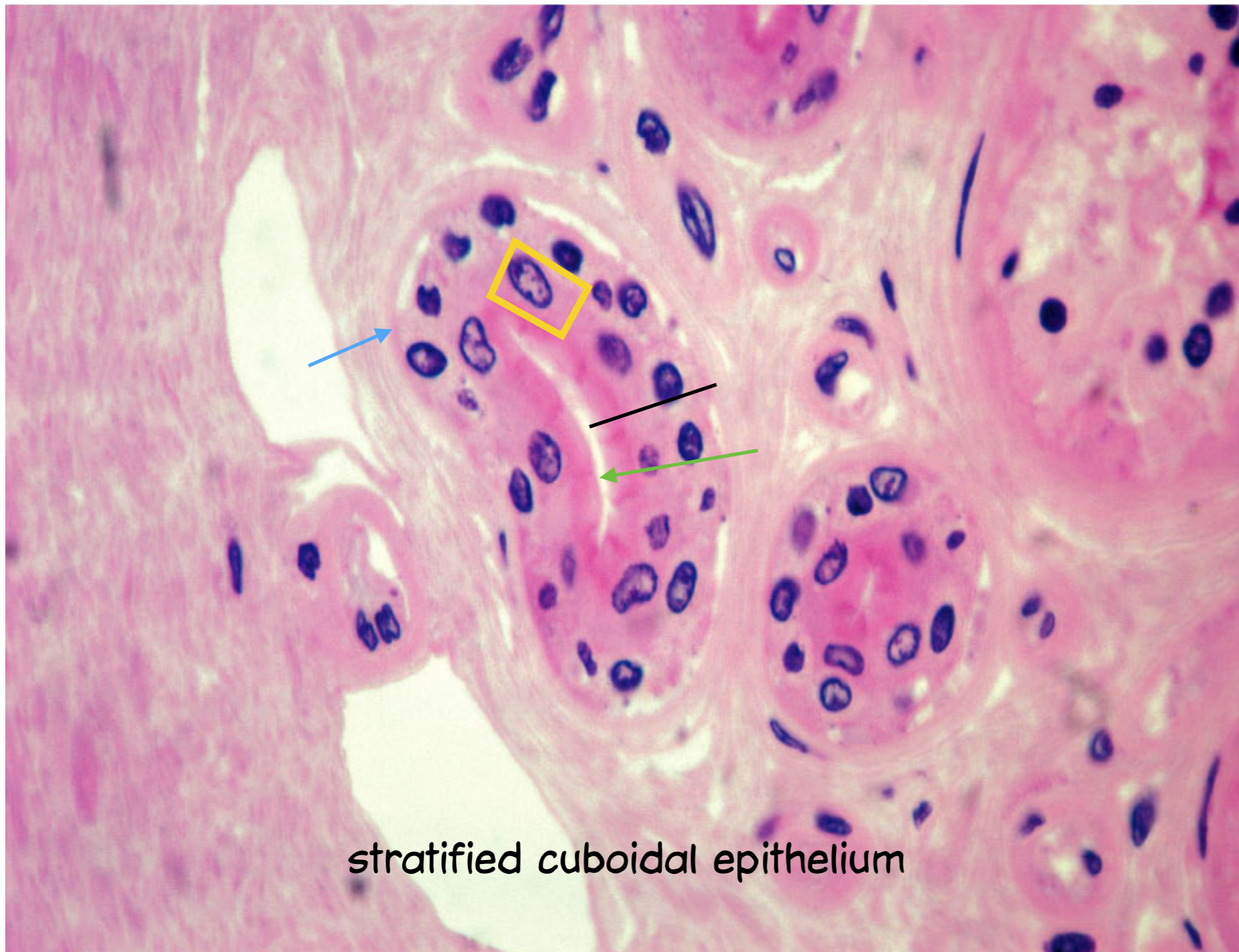
- identification and type/kind of matrix
- name of a matrix-producing cell



Class Codes!

Turn in your picture to the Google Classroom!

Exploring Human Tissues



Tissue from background

Trace a single cell

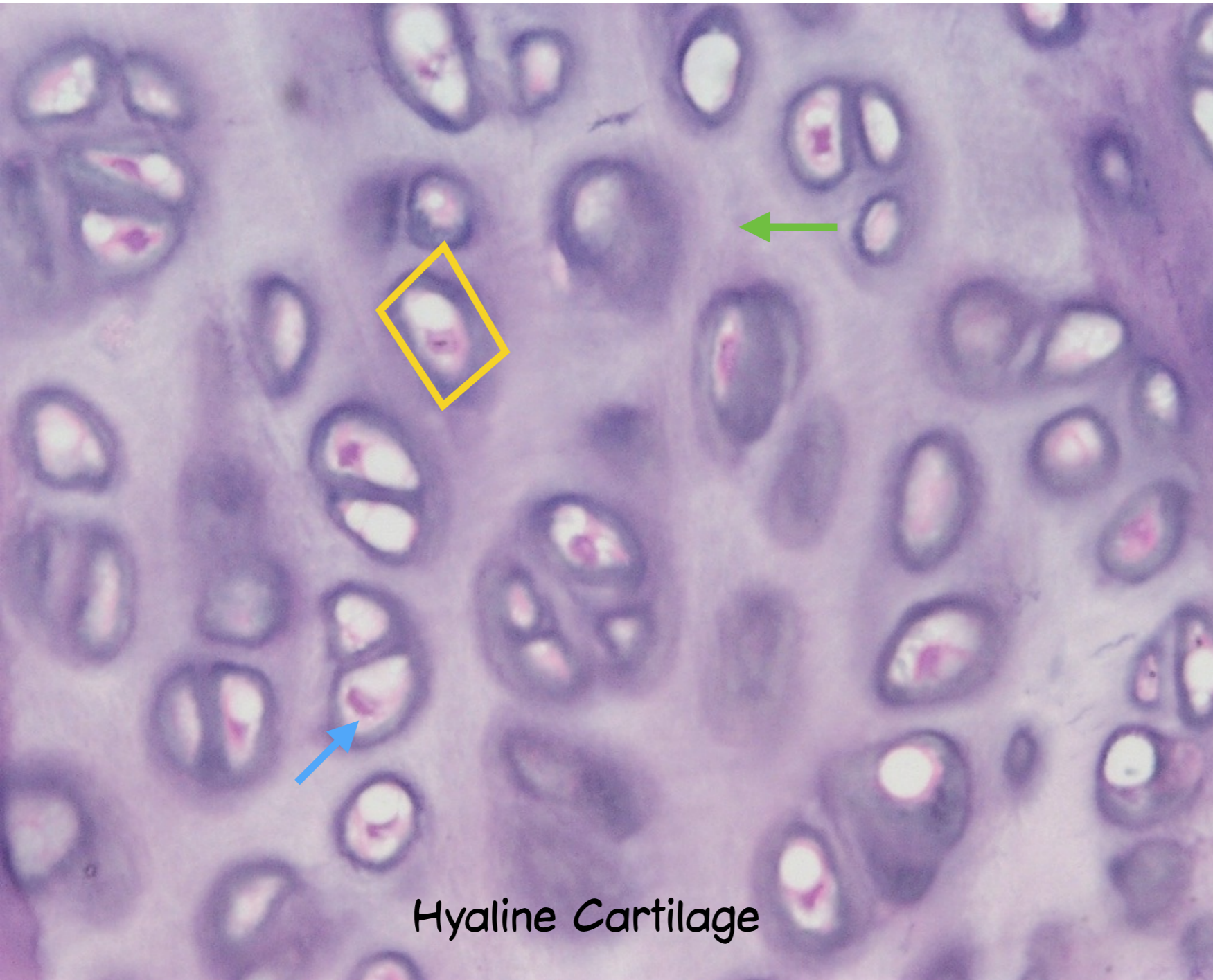
apical surface

basement membrane

stratified cuboidal epithelium

Turn in your picture to the *Google Classroom!*

Exploring Human Tissues



Trace a single cell

matrix of chondroitin sulfate

matrix producing cell -
chondrocyte

Turn in your picture to the *Google Classroom!*