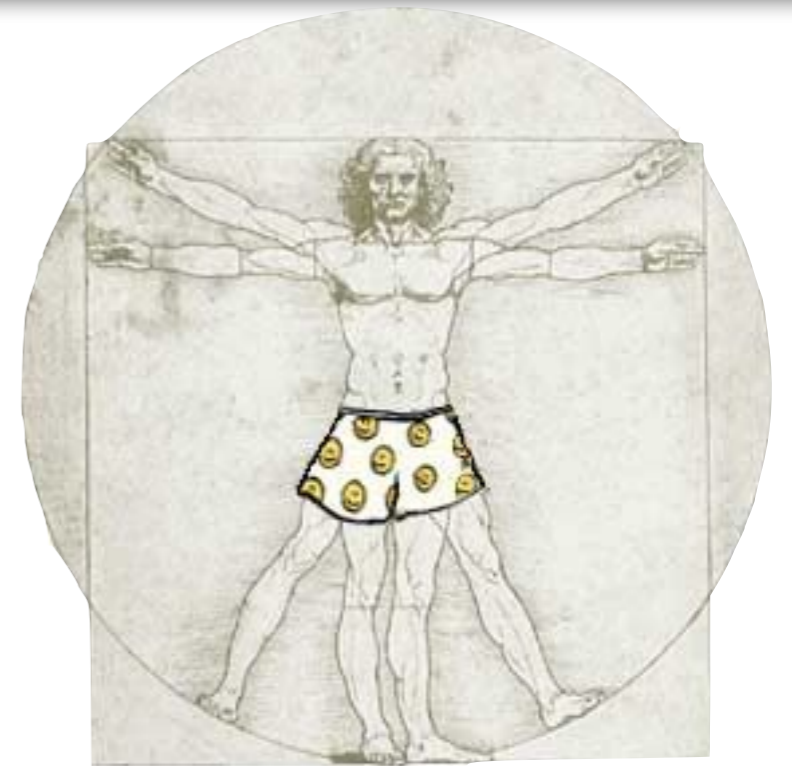
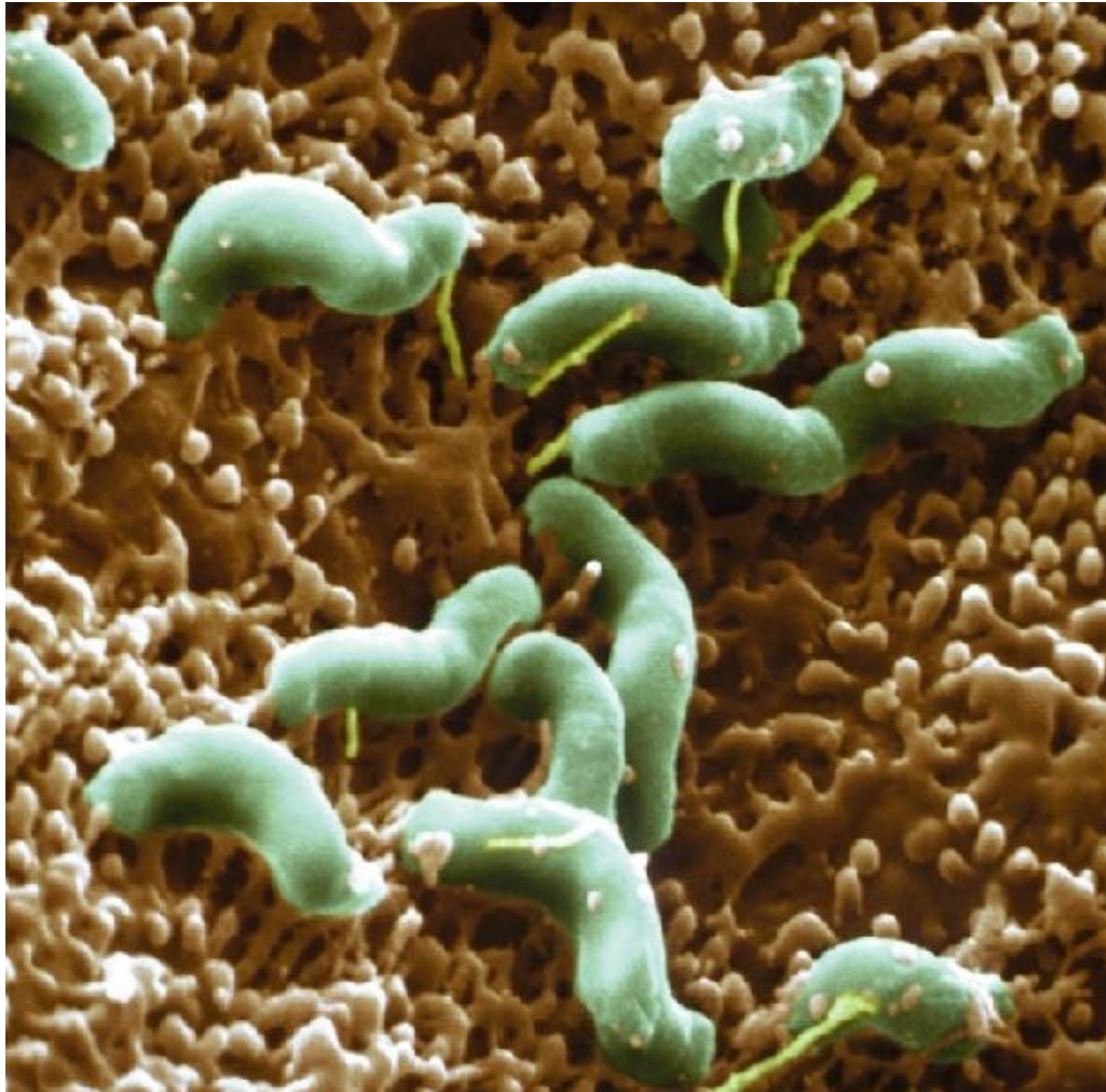


# Unit 14

## Pig Stomach and Liver Observations



*Miss School, Miss Out!*

# Pig Stomach and Liver Observations

**Question:** Can you determine an organ's function by making simple observations?

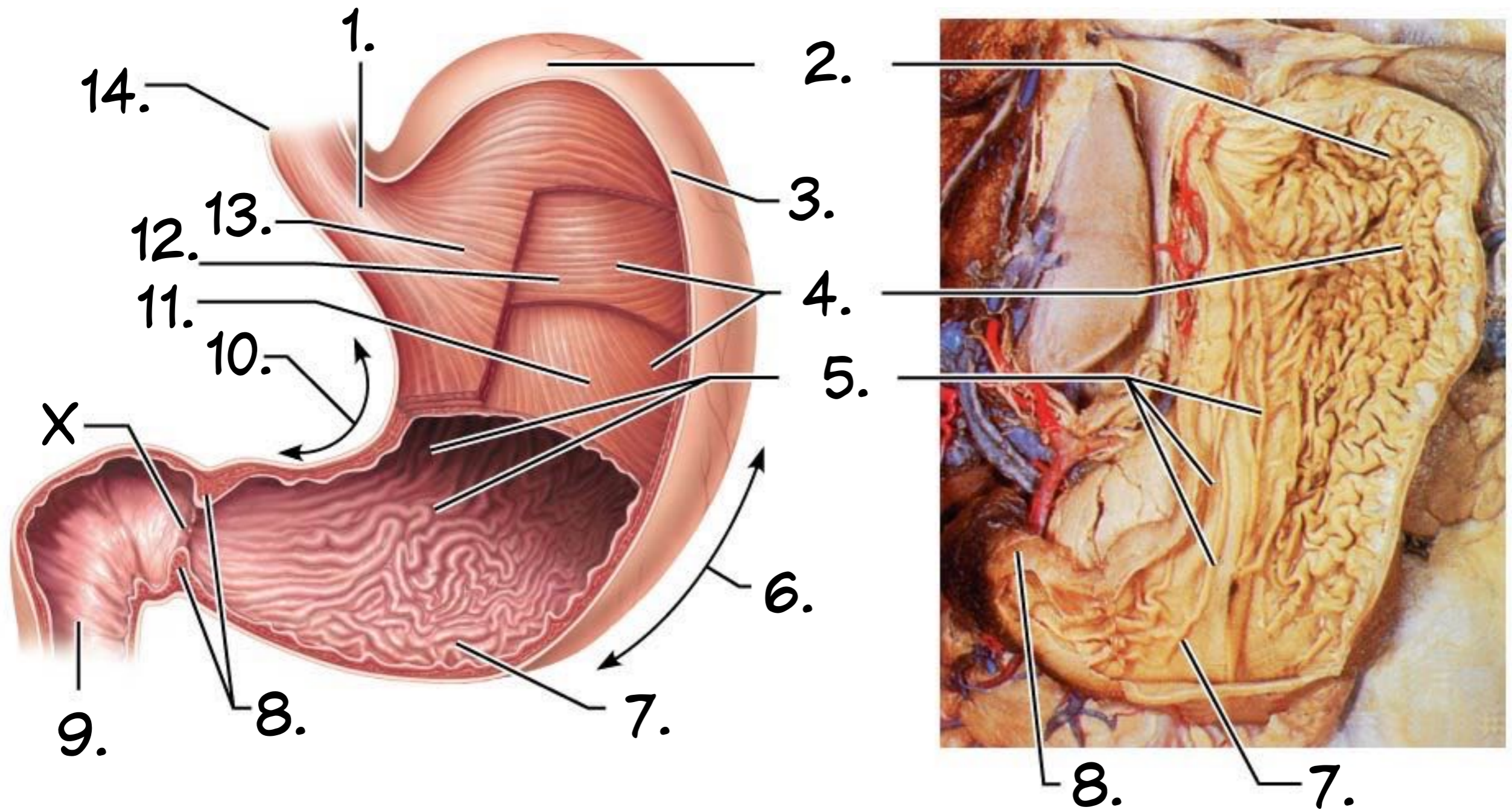
**Observations:** Provide 5 observations and 2 inferences about the pig stomach and 5 observations and 2 inferences about the pig liver.

**Analysis:** Using the picture on p. 25 of your digital text, label the diagram on p. 4 of your study guide that shows the basic anatomy of the human stomach. Using the picture on p. 45 of your digital text book, label the diagram on p. 6 of your study guide that shows the basic anatomy of the human liver. Make sure you identify the various bile passageways.

**Conclusion:** State a function for stomach and the liver/gallbladder that is supported by your observational evidence.

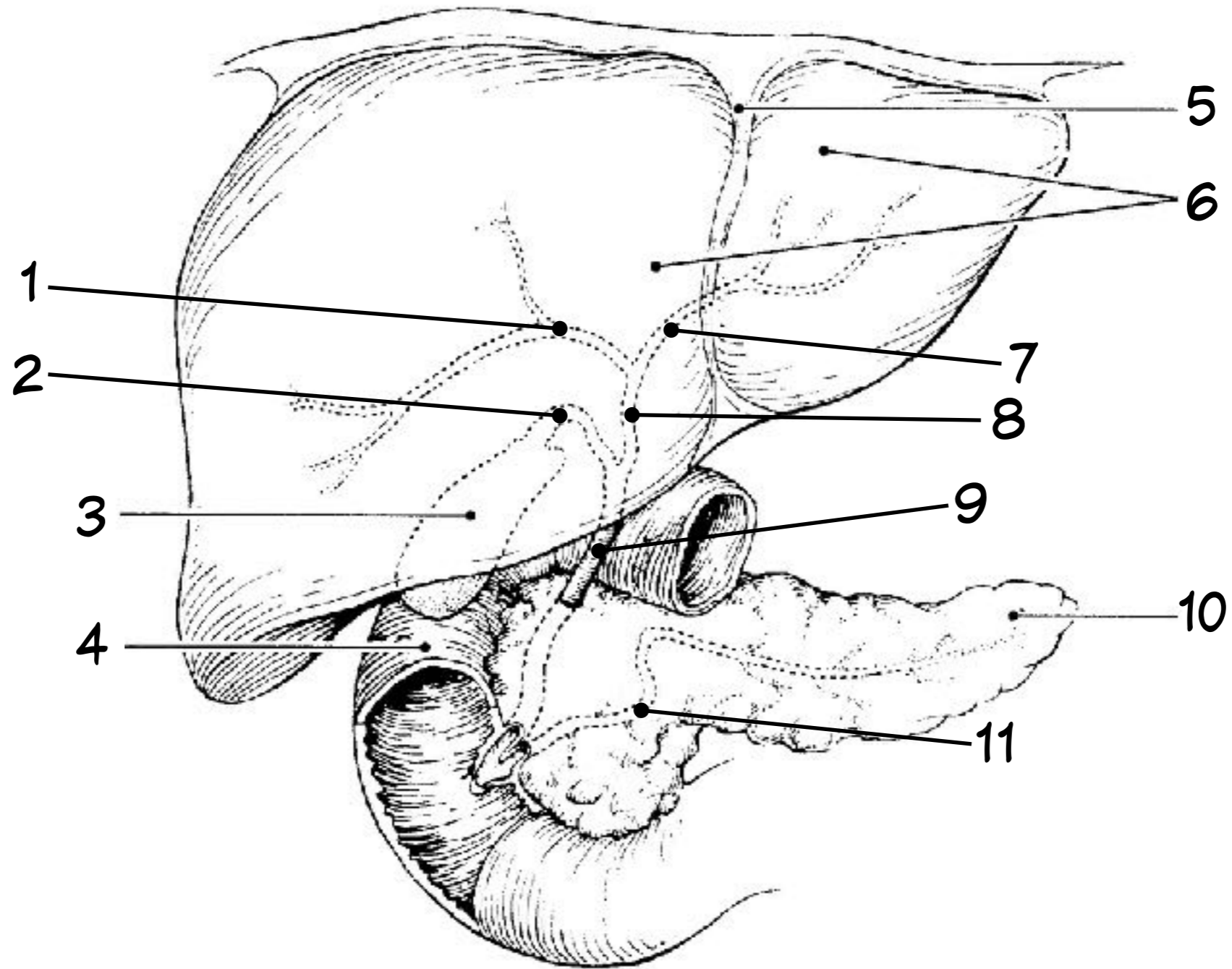
# The Stomach

body; cardiac sphincter; circular muscle layer; duodenum; esophagus; fundus; greater curvature; lesser curvature; longitudinal muscle layer; oblique muscle layer; pyloric antrum; pyloric sphincter; rugae; serosa;



# Accessory Organs

common bile duct; common hepatic duct; cystic duct; duodenum; falciform ligament; gallbladder; left hepatic duct; lobes of the liver; pancreas; pancreatic duct; right hepatic duct;



# Pig Stomach and Liver Observations Final

